



JANUARY 2026



2026  
REPORT

# MONTHLY REPORT

LATEST INFORMATION TO THE  
EXISTING STATUS OF THE PROJECT

# JANUARY 2026 OVERVIEW

## 1. Sanctuary Operations & Elephant Welfare

Elephant physical and psychological wellbeing continued to be the core focus.

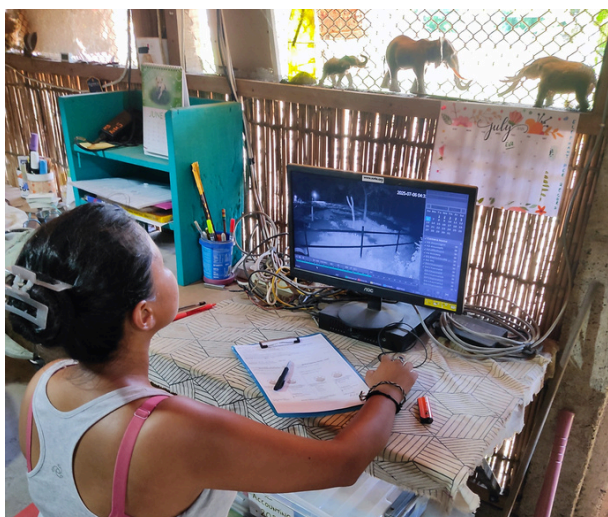
- Daily care and nutrition: Eva and Lhamo received consistent structured feeding, positive reinforcement engagement, and freedom to choose rest, play, and forage in the sanctuary environment, reinforcing normal elephant behaviors.
- Environmental enrichment: Regular access to natural jungle space and enrichment (e.g., water play, exploration) supported welfare goals.
- Sanctuary best practice: continued emphasis on ethical elephant management and care protocols that meet welfare science standards and avoid exploitative practices.

Operational challenges:

- Seasonal resource planning remained critical (feedstock, hay storage, staffing), tracked closely against projected needs for the coming lean season.

## 2. Veterinary & Husbandry Updates

- Routine health assessments and husbandry continued without major incident.
- Specialized enrichment and dietary planning ensured a balanced fibrous diet, aligned with physiological requirements for captive Asian elephants.
- Veterinary follow-ups were conducted as needed, with documentation maintained in elephant health records.
- Stand Up 4 Elephants continues to actively participate in ongoing national and international scientific research initiatives aimed at improving the welfare, management, and long-term wellbeing of captive elephants.



Sleeping data are daily collected since years - SU4E 2026

# JANUARY 2026 OVERVIEW

## 3. Field Activities & Community Engagement

Local support and community engagement remained strong:

- In January, SU4E conducted snake awareness and safety training for the team, addressing the risks associated with working in jungle and grassland environments in the Terai region. The training focused on snake identification, behavior, and prevention, emphasizing calm, appropriate responses to avoid unnecessary incidents.
- Team members were trained in safe working practices, particularly during night checks, early morning activities, and movements in dense vegetation, as well as emergency response protocols in the event of a snakebite. Special attention was given to situations involving elephants, where sudden reactions could pose additional risks to staff.
- This training strengthens staff safety, operational preparedness, and coexistence with local wildlife, reflecting SU4E's commitment to professional risk management and ethical conservation practices.

## 4. Partnerships, Awareness & Education

Outreach highlights:

- Awareness, partnership, and education activities continued steadily in January, with a low but consistent flow of visitors. The SU4E sanctuary is now sufficiently well known that some visitors choose to stay in the Amaltari area rather than Sauraha, seeking a more nature-focused and ethical experience. Guests were encouraged to extend their visit to the Jatayu Restaurant, a conservation-based NGO dedicated to vulture protection, strengthening local conservation partnerships. SU4E also welcomed school visits and organized groups, contributing to ongoing education and awareness on elephant welfare and wildlife conservation.

# JANUARY 2026 OVERVIEW

## 5. Ramu

In January 2026, Stand Up 4 Elephants continued its dedicated support for Ramu, ensuring his well-being and comfort. Last month, the team focused on completely renovating his shelter: bent metal poles threatening to collapse were repaired, the old, dirty substrate was removed and replaced with fresh material, and his concrete water tank was thoroughly cleaned. SU4E's team visits Ramu at least three times a month, while members of the NGO bring the required food almost daily and check that everything is in order for his mahout, Sujan, making sure Ramu receives the care and attention he deserves.



New soil brought for more  
hygienic substrate

# THE STATISTICS - EXPENSES

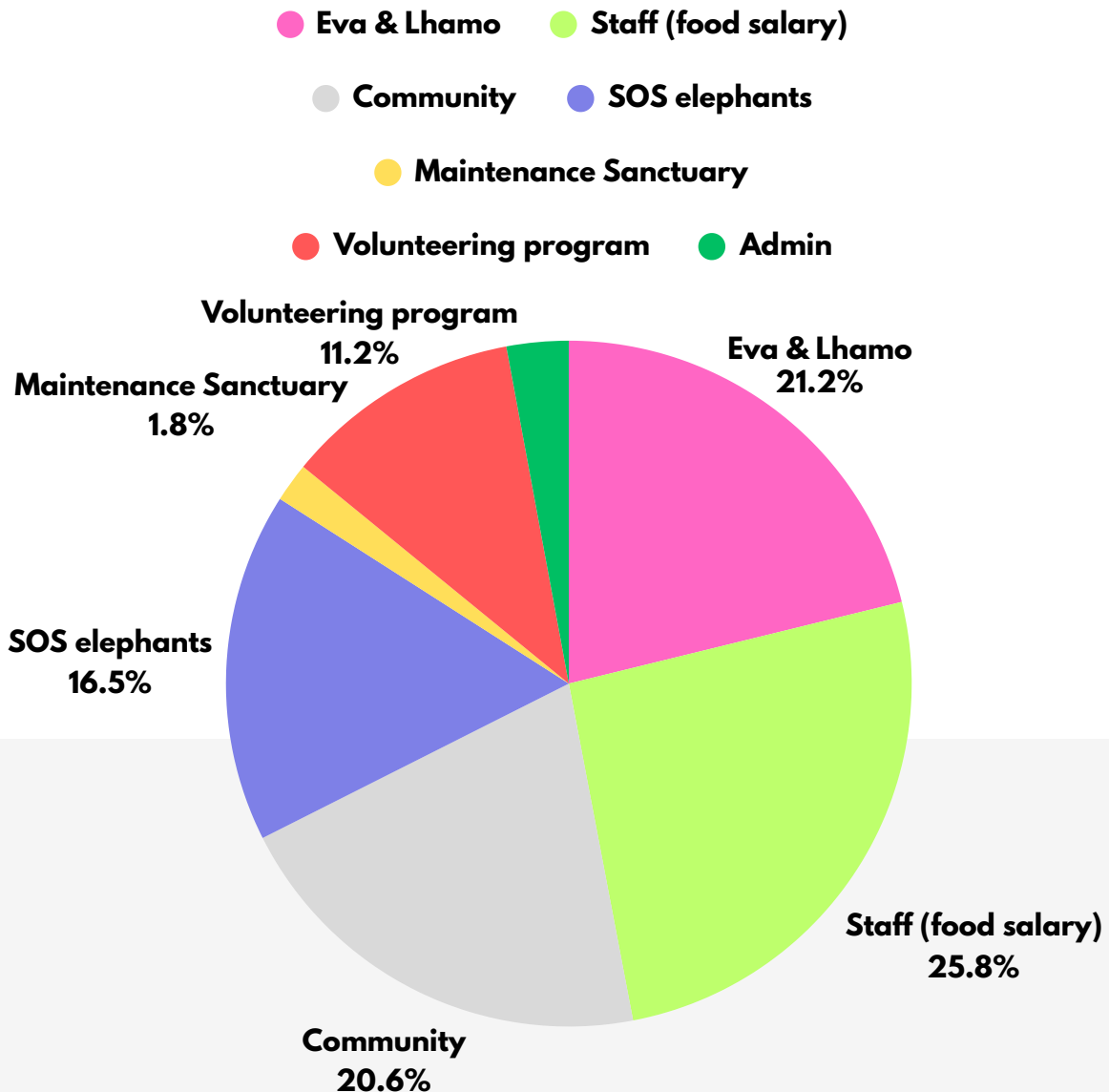
## Financial Overview - January 2026

### Donor support:

January communications encouraged ongoing monthly giving to stabilize operational budgets. Reporting on sustained partnerships reaffirmed accountability and transparency to stakeholders.

### Documentation & Compliance:

Record-keeping strengthened for health, care, and donor recognition activities, aligned with institutional standards for NGO reporting.



# PHOTOS OF JANUARY 2026

## Snake Workshop



# PHOTOS OF JANUARY 2026

Snake Workshop

